

VINTRY  
— & —  
MERCER



# PAST MEETS PRESENT

*Vintry & Mercer is set in London's Vintry Ward, among the livery halls, guilds and narrow streets that line the banks of the Thames.*

*This is where past and present intersect, where the long traditions of trade and commerce come to life in the contemporary style of the hotel's 92 bespoke rooms and suites.*

*The dynamism between old and new plays out again and again — in the hotel's two restaurants, or the barrel-aged cocktails from the speakeasy bar, in the old traveller maps decorating walls, or the modern chandelier by Moooi.*

*It's a hotel in the heart of the City, alive with the bustle of commerce and conversation that reflect its first-class location at the centre of a turning world.*

## THE OLD

Vintry & Mercer is inspired by the historic trading guilds of the area, the clothworkers and ironmongers, the salters and grocers. Vintry, a guild established in 1364, was the centre for London wine merchants, and Mercer, established in 1304, was for noble textile sellers who specialised in fine silks and damasks. The nearby street names — Wine, Honey, Saffron, Garlic, Cinnamon — pay tribute to the exotic ingredients that once arrived on the shores of the Thames, filling the city with colour. The hotel's interiors echo this layered history — leather door handles, velvet curtains, palm leaf wall-prints inspired by the East Indies.

*“London is on the whole the most possible form of life.”*

HENRY JAMES



## THE NEW



*“The City seems so much more in earnest: its business, its rush, its roar are such serious things, sights and sounds.”*

CHARLOTTE BRONTË

Vintry & Mercer sits tucked away on quiet Garlick Hill, named after the bulbs sold by Cockney traders. Now this historic locale is a destination for the modern traveller — someone who wants the luxury of today laced with a taste of the past. It's a place where architectural wonders like St Paul's Cathedral share the cityscape with global powerhouses, from the Bank of England to the Bloomberg Media Group. In the narrow backstreets nearby, history perseveres. Yet guests are connected to the rest of the capital via the extensive rail and underground network, accessible from Mansion House and Cannon Street stations.



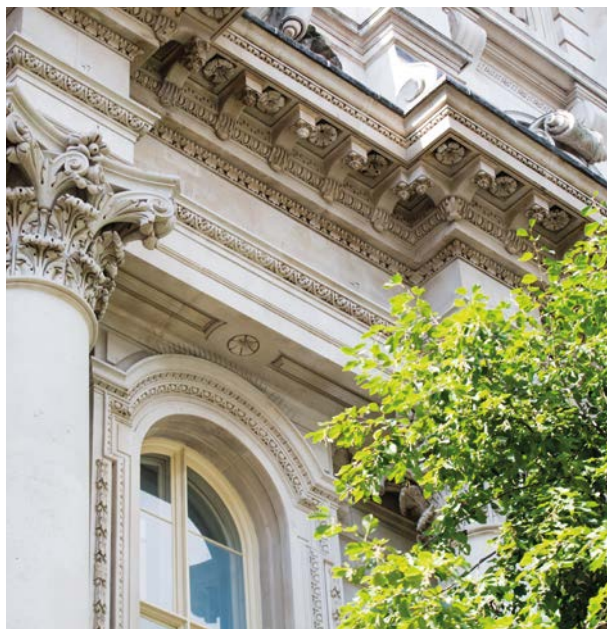
# STORIES IN STONE

# VISIONS IN GLASS



# THE NEIGHBOURHOOD

*Vintry & Mercer is at the heart of  
the City of London, where contemporary  
design meets iconic architecture.*



## OLD BUILDINGS

Vintry & Mercer is surrounded by London's most iconic architectural treasures. From the roof terrace, guests can gaze at St Paul's Cathedral, designed by Christopher Wren, which held the wedding of Princess Diana and the funerals of Winston Churchill and Margaret Thatcher. Runners can take the Thames Path — a route which tracks along the banks of the Thames, past many of the world's most recognisable buildings. East leads to the Victorian-built Tower Bridge and the infamous Tower of London, prison to Guy Fawkes and Rudolf Hess. West passes by Big Ben, the London Eye, and the nation's seat of power, the Houses of Parliament.

## NEW DESIGN

The City of London has become a ground-breaking architectural hotspot, with some of the most iconic new structures in Europe. There's The Shard — the tallest building in The UK — and 30 St Mary Axe, nicknamed 'The Gherkin'. 20 Fenchurch Street, home to the landscaped 'Sky Garden', looks like it has blown sideways in the wind, with a gravity-defying, open-air terrace on the 35th floor. The Millennium Bridge runs across the Thames near the hotel, offering views up to St Paul's Cathedral on the north bank, and down to Tate Modern on the south.

*"To walk alone in London  
is the greatest rest."*

VIRGINIA WOOLF







#### OLD MARKETS

In the thirteenth-century, the first international company in the world began trading just a stone's throw from where Vintry & Mercer now stands. This history has been memorialised by the cobbled bazaars and colourful markets that continue to weave a mercantile spirit through the City today. One of the most famous is Leadenhall — a striking Victorian covered market, home to artisanal cafes and English food stores.

There's also the vintage fashion market of Petticoat Lane which twists through the narrow streets, not far from Old Spitalfields. Borough Market, across the Thames, has been selling food for a millennium, from mead in the Middle Ages to the English cheeses of today.

#### NEW SHOPS

A retail revolution has transformed old into new, turning sixteenth-century structures into first-class shopping destinations. Royal Exchange, one of Britain's best-known malls, is now filled with bespoke jewellers and designer labels. Cheapside, which sold the garlic brought up from the port on the Thames, now bustles with big-name restaurants and high street boutiques. One New Change, built on the spot where bread and milk were traded in the thirteenth century, is one of the City's newest and largest retail hotspots, offering three floors of shops and restaurants.



#### OLD HISTORY

The buildings around Vintry & Mercer have stood the test of time, enduring the Great Fire of 1666 and the Blitz of 1940 and 1941. On the church of St. James Garlickhythe, Vintry & Mercer's closest neighbour, hangs the capital's oldest clock — housing a mechanism which has been ticking since 1682. Today it's also home to the patriotic Royal Bells that pealed across the city for the Queen's Diamond Jubilee. Across the Thames sits Shakespeare's Globe, where visitors can watch the Great Bard's plays performed in the theatre dedicated to his work.



*"I've been walking about London for the last thirty years, and I find something fresh in it every day."*

WALTER BESANT

#### NEW CULTURE

The City of London is buzzing with culture, from pop-up galleries and temporary exhibitions to new and bold theatre productions. The Barbican Centre, a mile from the hotel, is known for pushing the boundaries of art in all its forms, regularly showing some of the best dance, music and theatre in Europe. Nearby Somerset House is famed for its contemporary galleries and cultural programmes. There's also Tate Modern on the opposite bank of the Thames — perhaps the UK's best-known modern art institution.





# NINETY TWO ROOMS

# ONE MEMORABLE STAY



ROOMS

92

FLOORS

10



TYPE OF ROOM

5

- Standard
- Superior
- Deluxe
- Studio
- Studio Suite

ROOFTOP

Mercer Roof Terrace

111

FITNESS ROOM

BAR

Do Not Disturb

MEETING ROOMS

3

RESTAURANTS

Vintry Kitchen  
Mercer Roof Terrace

2



# THE HOTEL HITHE

*“London is like a smoky pearl  
set in a circle of emeralds.”*

WILLIAM HENRY RIDEING

Vintry & Mercer’s main entrance opens onto Garlick Hill — a narrow street built in the ninth century to link the port of Queenhithe with Cheapside’s markets. Where once the hithe welcomed traders from afar, now Vintry & Mercer invites travellers to relax in the grand armchairs and spoon-backed chairs of the Lobby and Reception. Both rooms are decked in shades of green and cream, pillars are wrapped in greenery, and windows are accented by the hues of living flora. At the heart hangs a dramatic chandelier by Moooi — a subtle reference to Vintry & Mercer’s sister hotel, The Ampersand, which also has a feature light winding up its spiral stair.

## ROOMS AND SUITES

Plush velvet curtains, bespoke fabrics, leather door handles — each design detail at Vintry & Mercer has been inspired by the merchant taylors who touted their wares on the nearby streets. This is seen again in the antiquarian images of the old worshipful companies on the walls — the grocers and haberdashers, the ironmongers and vintners. There are historic navigation maps, and palm leaf wall-coverings, made-to-measure velvet headboards and soft Persian carpets. Each element is a nod to the past and to the exotic lands merchants once travelled from, bringing honey and saffron from afar. But alongside these elegant references, rooms are equipped with modern luxuries — LCD TVs with movies on demand, Wi-Fi throughout, C.O. Bigelow Apothecaries bathroom products, as well as Nespresso machines and Marshall speakers for Superior rooms and above. Some rooms can be interconnected for families, and twin beds are available on request. Windows are triple-glazed so that rooms remain a place of calm.





# STANDARD

14-16 SQM

Vinty & Mercer's Standard Rooms offer an intimate central London base. Guests can fall back onto the soft double beds, backed by large ochre-coloured headboards with matching cotton velvet curtains. Feature wallpaper depicts abstract maps of the city.







## SUPERIOR

17-22 SQM

**A**ntique-style maps adorn the walls in Vintry & Mercer's Superior Rooms, depicting old trade routes. Elegant, homely details include custom-designed velvet headboards in shades of teal, Nespresso machines, Marshall speakers, and large walk-in showers.







# DELUXE 21-24 SQM & STUDIOS 21-28 SQM

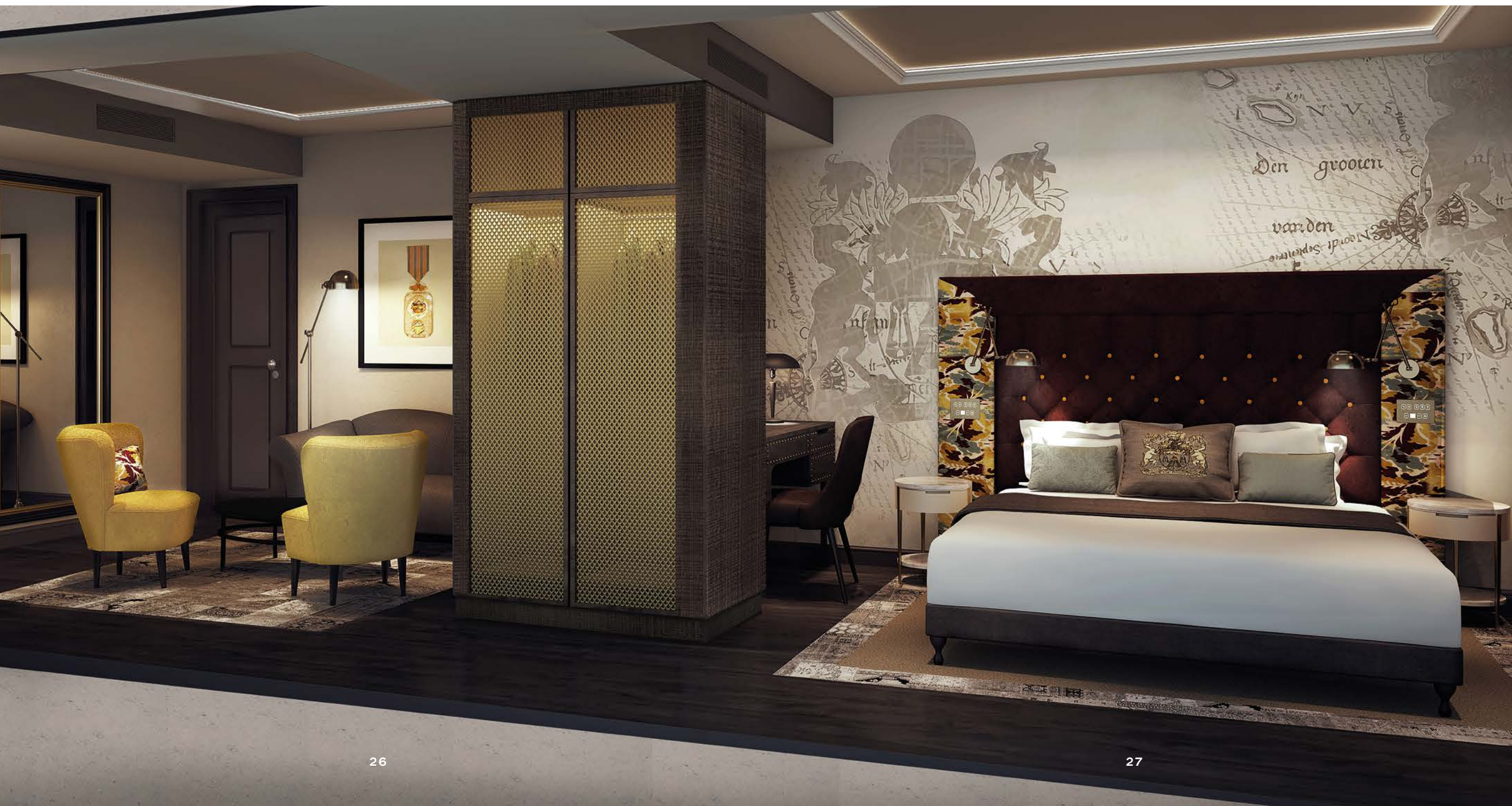
These rooms have king-sized beds backed by deep purple velvet headboards, and a chaise longue or plump armchair. An intricate needle-and-thread wallpaper references the mercers who used to import fine silks just a stone's throw from where the hotel now stands. There are also larger Deluxe Studios offering even more space to unwind.





# STUDIO SUITE

27-32 SQM

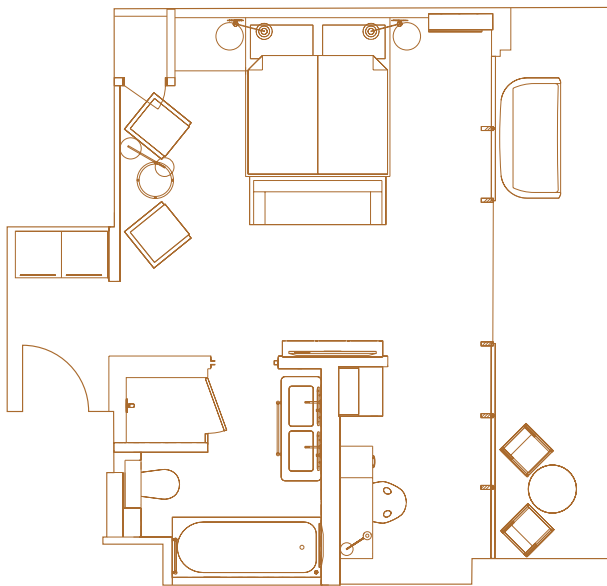




# BALCONY SUITE

27-32 SQM

**B**alcony Suites have long external balconies spanning the width of the room, and Corner Suites offer views of the cityscape through floor-to-ceiling windows on two sides. Guests can relax on the king-sized beds, lounge in the upholstered sofas of the sitting area, and soak in the freestanding bathtub, complete with an in-built television.





PATIENTLY AGED

FRESHLY CAUGHT

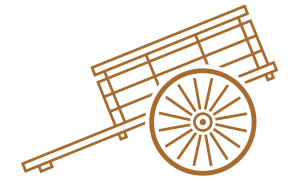


## VINTRY — KITCHEN —

Vintry Kitchen is an Asian tapas restaurant on the ground floor — an all-day space, offering informal dining from breakfast to dinner. The menu pulses with fresh, bold Asian flavours, and wine takes centre stage — close to the hotel, merchant sailors landing from Bordeaux would store their wines. Vintages are tapped straight from the large barrels that line the gantry. There's also an open pantry and a tiled bar with high stools, as well as leather banquettes around small tables so that groups can dine together from the restaurant's sharing plates. Daylight floods in through the long skylight, framed in greenery.







## MERCER

ROOF TERRACE

It is at Mercer Roof Terrace, on the top floor of Vintry & Mercer, that old and new truly collide. In one sweep, the view takes in London's skyline, from the dome of St Paul's Cathedral to the glass tip of The Shard. Dinner can be served al fresco above the city lights. Inside, the atmosphere is warm and convivial, with floor-to-ceiling glass doors opening wide to the night's sky. The menu celebrates the best of British cooking, using sustainably sourced meat and fish from the British Isles. There will be oysters, or 30 day-aged steaks, roasted scallops or charcoaled veal. Food is matched with English wines, as well as New and Old World classics. Cocktails include inventive recipes using house-infused spirits displayed in large, colourful glass carafes on the bar.











DND

**H**and-beaded images of Ziegfeld Follies girls line the walls, while a two-metre sculpture of a keyhole at the entrance beckons guests into this clandestine bar through a darkened tunnel tucked back on Garlick Hill — though residents of the hotel can access DND through a private door. The room opens up to leather banquettes and raspberry-velvet stools, barrel-aged cocktails and sultry lighting. This is the scene at DND, Vintry & Mercer's speakeasy-style cocktail bar hidden in the hotel's basement. The mood is one of retro glamour and sophistication — a reflection of the notorious prohibition speakeasies that crept into the back streets of 1920's New York.







## BREAKOUT & WORKOUT

Vintry & Mercer is a place to unwind, in a modern environment inflected with notes of the past. On the lower ground floor the fitness studio is kitted out with the latest Life Fitness workout equipment — a treadmill, exercise bike, cross trainer and rowing machine, as well as an integrated digital screen with Internet access and iPhone dock. There's also a breakout space with small desks, complete with state-of-the-art computers available for guests to use any time of the day. Here, old leather suitcases pile high in an art installation that celebrates the history of travel.





## MEETING OR DINING

*There are three meeting rooms on the lower ground floor, each inflected with individual character and style, in a part of the hotel that is secluded and quiet.*

*Features include large LED screens, top-of-the-range audio and visual equipment, mini-bar fridges, Nespresso machines and high-speed internet.*

### THE LIBRARY

*Capacity: 14 seated / 28 standing*

The Library is a reflection of London's history as a trading entrepôt, with the ceiling decked in an enormous navigation map taken from old travel books. When not hired out, the Library is a quiet spot for guests to go and read books, or just a place to get lost in thought. It's the largest of the meeting spaces and can be hired for private use, offering an informal setting for events or business meetings.

### THE DRAWING ROOM

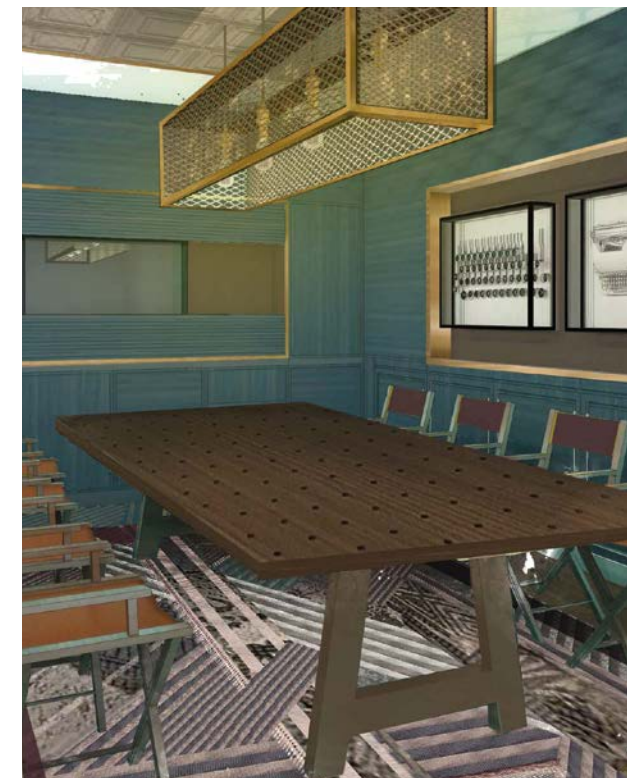
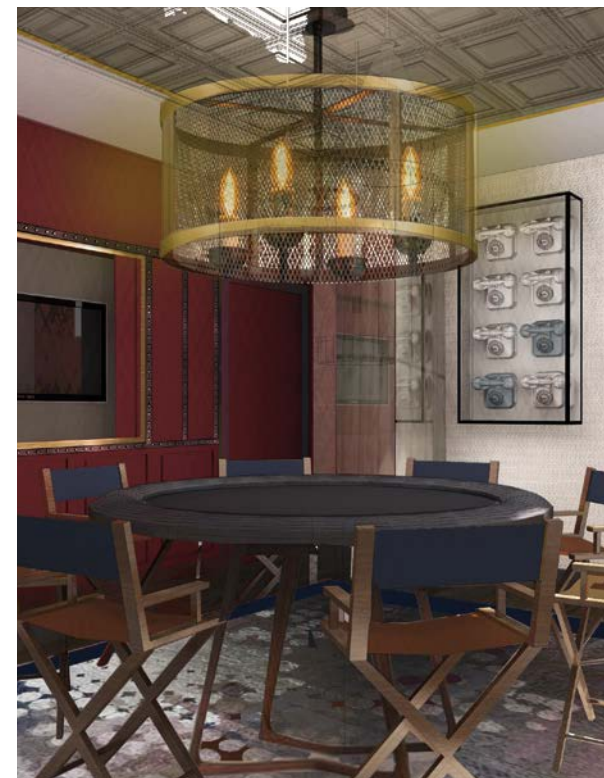
*Capacity: 8 seated / 16 standing*

The Drawing Room is interconnected to The Library and offers an intimate space for meetings and events. The history of the area is played out in the design — wine red walls and a bold, limited edition print of the city. There's also a French panelled ceiling and a copper mesh chandelier.

### THE MUSIC ROOM

*Capacity: 10 seated*

The Music Room has eclectic teal blue wall panels, wooden writing tables and a bespoke carpet inspired by the British Regimental tiles. Colourful, iconic British album covers decorate the walls. It's a place where guests can meet, dine and listen to music — using the room's collection of records, or their own favourite vinyls.





# GETTING HERE

## BY AIR

*London Heathrow (LHR)* — approximately a 60-minute drive from the hotel. The Heathrow Express operates out of Paddington station every 15 minutes with a journey time of 15 minutes. Paddington Station is approximately a 35-minute drive from the hotel or by tube from Mansion House Underground Station.

*London Gatwick (LGW)* — approximately a 90-minute drive from the hotel. The Gatwick Express operates out of Victoria station every 30 minutes with a journey time of 30 minutes. Victoria Station is approximately a 20-minute drive from the hotel or by tube from Mansion House Station.

*London City (LCY)* — approximately a 30-minute drive from the hotel. The DLR operates from Bank Station, which is a 10-minute walk away and then a 20-minute travel time on the DLR direct to London City Airport.

*Stansted (STN)* — approximately a 60-minute drive from the hotel. The Stansted Express operates out of Liverpool Street Station every 15 minutes with a journey time of 50 minutes. Liverpool Street Station is approximately a 15-minute drive from the hotel.

*Luton (LTN)* — approximately a 75-minute drive from the hotel. A train service to Luton Airport is available from St Pancras Station and is approximately a 45-minute ride way. A five-minute bus connection is required to the Airport Terminal.

## BY TRAIN

The nearest underground station is Mansion House on the Circle and District line — only a two-minute walk from the hotel. London Cannon Street station is a similar distance from the hotel and connects guests to Southeastern services. Bank station, which is serviced by Northern, Central, Circle, District, and Waterloo and City lines, is a five-minute walk. St Pancras International is a 20-minute tube ride away, connecting guests to Paris and Brussels by the Eurostar.









